

Rectifier diode

SMC 300 V



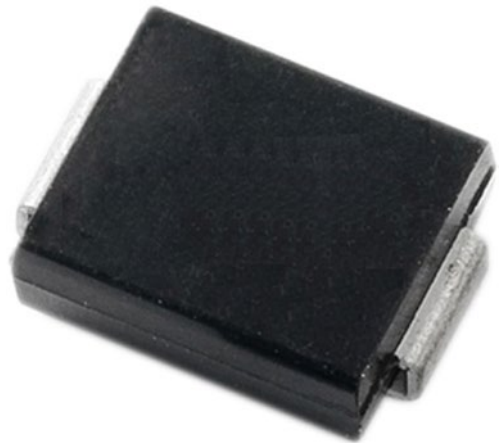
For surface mount applications

Low profile package

Glass passivated chip junction

SPECIFICATION:

Peak off-state voltage	300 V
Forward current	3.0 A
Recovery time	35 ns
Housing type	SMC
Configuration	Single
Operating temperature	-55...+150 °C
Conducting-state voltage	1.25 V
Off-state current	5 μ A



Art. Nr.

RND ES3EC-AT

